



English in Canada

SPRACHCAFFE

# Toronto

6 weeks starting from  
**2.610,-** CAD  
Incl. course & accommodation



CANADA: TORONTO

Toronto offers great attractions in and outside the city, such as the Niagara Falls. Detailed guidance is provided by our friendly staff.

Students can count on top quality English courses and a world of entertainment when taking a course at Sprachcaffe Toronto.

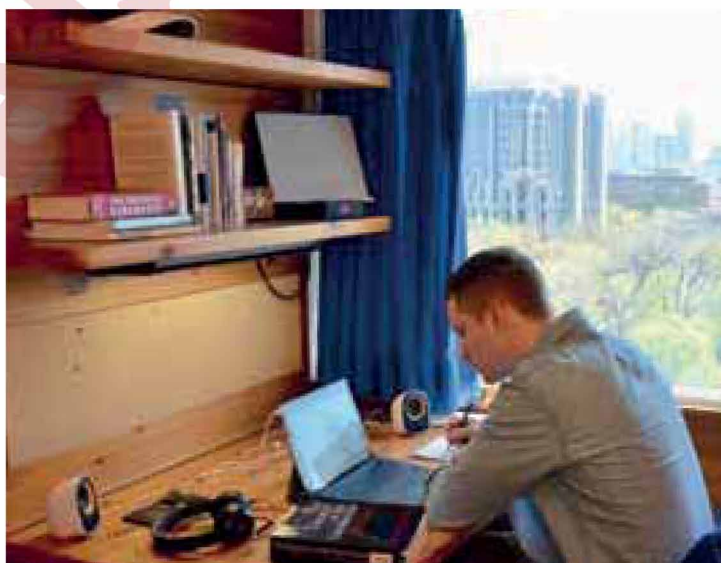
### Checklist

- Language course as booked – Registration fee: CAD 150 (non-refundable)
- Accommodation as booked – Placement fee: CAD 200 (non-refundable)
- Study Club
- Letter of acceptance for visa purposes included in the registration fee
- Placement test and certificate included in the price
- Textbooks at school (on loan CAD 10 / week, CAD 80 deposit)

### Tuition

Prices per week in CAD + Registration fee: 150

	1-8 weeks	9-16 weeks	17+ weeks
<b>Part-Time Course</b>			
10 lessons per week / max. 14 students per class	140	125	105
<b>Standard Course</b>			
20 lessons per week / max. 14 students per class	270	255	235
<b>Standard Plus Course</b>			
24 lessons per week / max. 14 students per class	310	295	275
<b>Intensive Course</b>			
30 lessons per week / max. 14 students per class	360	345	325
<b>Super Intensive Course</b>			
40 lessons per week / max. 14 students per class	430	415	395
<b>Study Club</b>			
Tricky questions or creative brainstorming - our study club is your best coach! Recap of the lessons, assistance with homework and much more - without extra costs! 2 lessons per week	incl.	incl.	incl.
<b>Workshops</b> (Duration: 1 week each)			
10 extra lessons per week / max. 14 students per class / not available in July			
Monday of month:	1st	2nd	3rd
Business English	✓	✓	✓
Communication Skills	✓	✓	✓
Job Applications & Interview	✓	✓	✓
Sales & Marketing	✓	✓	✓
Business Negotiations	✓	✓	✓
Public Speaking & Presentation	✓	✓	✓
<b>IELTS / TOEFL Exam Preparation</b> (Duration: 12 weeks)			
(30 lessons per week / max. 10 students per class / Exam fee not included)	-	345	-
Starting dates: on average every 4 weeks			
<b>Intensive English for Academic Purposes / University Pathways</b>			
30 lessons per week / max. 14 students per class. Processing fee: + 300	-	345	325
<b>Super Intensive English for Academic Purposes / University Pathways</b>			
40 lessons per week / max. 14 students per class. Processing fee: + 300	-	415	395
<b>One to One Course</b>			
(also online before / after your stay available)			
5 days per week / 2 lessons daily (for 4 or 6 lessons daily multiply accordingly)	500	500	500



Students can choose between living in authentic homestay accommodation or our private residence with other international students.

Accommodation (Sunday – Saturday)	Season A	Season B	Season C
	until Mar 28 / from Sep 27	Mar 29 - Jun 20 / Aug 23 - Sep 26	Jun 21 - Aug 22
Prices per week in CAD + Placement fee: 200			
<b>Homestay HB</b>	260	285	310
	280	305	330
<b>Homestay FB</b>	280	305	330
	300	325	350
<b>Residence</b>	370	395	420
	420	445	470

### Course starting dates for all levels but elementary students: every Monday

#### Course starting dates for elementary students 2020:

January 2020: 6	June: 1 + 29	November: 16	January 2021: 4
February: 3	July: 27	December 2020: 14	February 2021: 1
March: 2 + 30	August: 24		March 2021: 1
April: 6	September: 21		For bookings sent after Dec 1st, the new pricelist will apply.
May: 4	October: 19		

### The school will be closed on the following public holidays in 2020:

January 2020: 1	July: 1	December 2020: 25 -
February: 17	August: 3	January 2021: 1 + 20
April: 10	September: 7	February 2021: 17
May: 18	October: 12	





English in Canada

SPRACHCAFFÉ

# Toronto

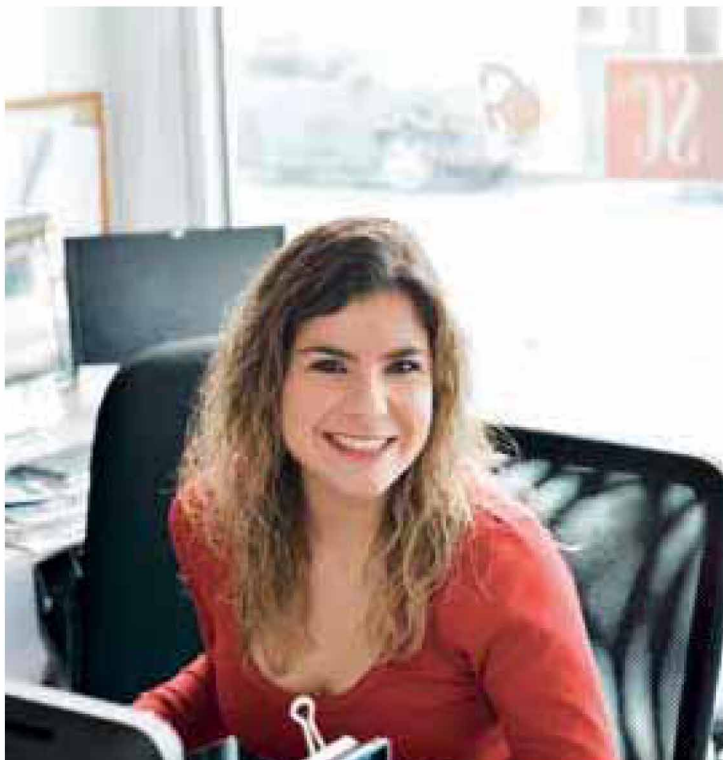


Accredited by



## Tradition meets Trend

More than 5 million inhabitants from over 100 nations, experience one of the most diverse cities in the world!



*Our Toronto school is located in the Old Town district, right in the heart of the city. The longest street in the world and several shopping centres are all within walking distance.*



**Established in 2006**



**Capacity around 150 students**



**Kitchenette with lunch area  
Student lounge  
Study room**



**Free internet access  
Computer area**

**Student population**



Western Europe	43 %
Asia	22 %
Americas	16 %
Eastern Europe	12 %
Others	7 %

