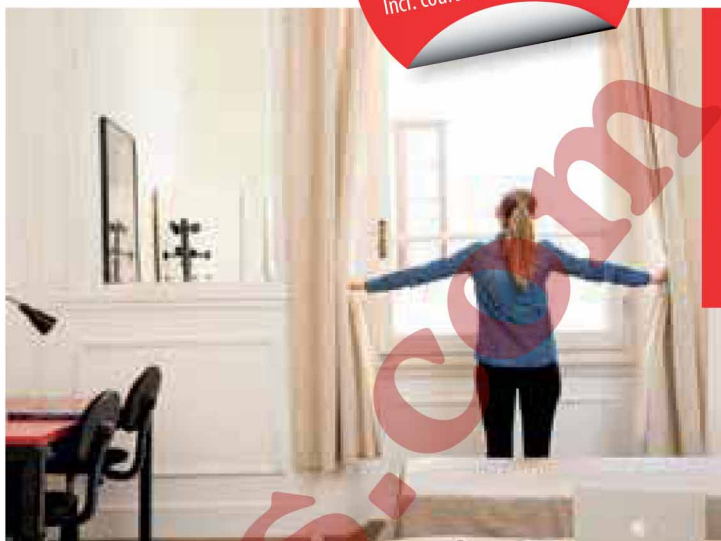
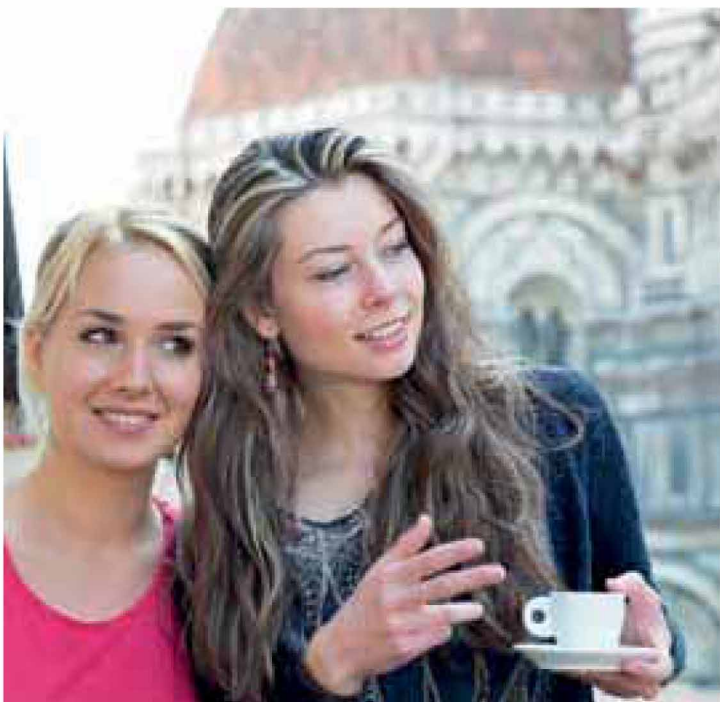


6 weeks starting from  
**1.570,-** EUR  
Incl. course & accommodation

ITALY: FIRENZE



The apartments are conveniently located on the school premises. Here you will enjoy an excellent view of Florence's top sights!



Latest standards in a historical old town. Welcome to our classrooms! A huge hall is dedicated to recitals and lectures and large common spaces allow students to relax, study and socialise between lessons. We are always here to help you organise your perfect stay!

A short walk leads you to the cathedral square, to the famous Duomo.

Tuition	1 - 8 weeks	9+ weeks
Prices per week in EUR + Registration fee: 50		
<b>Part-Time Course</b>	<b>120</b>	<b>100</b>
10 lessons per week / max. 12 students per class		
<b>Standard Course</b>	<b>170</b>	<b>150</b>
20 lessons per week / max. 12 students per class		
<b>Intensive Course</b>	<b>260</b>	<b>240</b>
30 lessons per week / max. 12 students per class		
<b>Super Intensive Course</b>	<b>390</b>	<b>370</b>
40 lessons per week / max. 12 students per class		
<b>Study Club</b>	<b>incl.</b>	<b>incl.</b>
Tricky questions or creative brainstorming - our study club is your best coach! Recap of the lessons, assistance with homework and much more - without extra costs! 2 lessons per week		
<b>CILS Exam Preparation 20 + 5</b> (Duration: 8 weeks)	<b>260</b>	<b>-</b>
20 lessons Standard Course + 5 lessons of Exam Preparation per week / max. 12 students per class / Exam fee not included Starting dates: Apr 06 Oct 12 Exam dates: May 30 Dec 03		
<b>35+ Active Language Stay</b>	<b>1350</b>	<b>-</b>
Standard Course, incl. accommo. in Comfort Apartment SR, activities (fees incl.) Starting Dates: Mar 02, Sep 21		
<b>One to One Course</b>	<b>380</b>	<b>380</b>
(also online before / after your stay available) 5 days per week / 2 lessons daily (for 4 or 6 lessons daily multiply accordingly)		

**Checklist**

- Language course as booked – Registration fee: EUR 50
- Accommodation as booked – Placement fee: EUR 80
- Study Club
- Placement test and certificate included in the price
- Textbooks on loan or to be purchased at the school
- Letter of acceptance for visa purposes: EUR 50 (non-refundable)

**Extra Curricular Activities**

**The Art History Courses** (10 hours) are organised over two weeks or a month. Classes are held in Italian, all teachers have a degree in art history and a great deal of teaching experience; they are also official tour guides authorised by the City of Florence. From the ancient world to modern times, analysis of the works of art which reflect the time in which they were made, the needs of the moment in which it was produced as well as the elite for whom it was made. Introduction to the figure of the artist and how his/her social position changed from simple artisan to intellectual. How to read a work of art. Entrance fees to museums are not included.

60

Accommodation (Sunday – Saturday)	Prices per week in EUR + Placement fee: 80	Season A	Season B	Season C
		until Mar 28 / from Sep 27	Mar 29 - Jun 20 / Aug 23 - Sep 26	Jun 21 - Aug 22
<b>Standard Apartment</b>	↔↔	140	170	210
	↔	190	220	260
<b>Comfort Apartment</b>	↔↔	210	240	280
	↔	260	290	330
<b>Homestay HB</b>	↔↔	180	210	250
	↔	250	280	320
<b>Studio (joint bookings only)*</b>	↔↔*	310	340	380
	↔	520	550	590

**Course starting dates for all levels but elementary students: every Monday**  
**Course starting dates for elementary students 2020:**

January 2020: 7 + 20	May: 11 + 25	September: 14 + 28	January 2021: 4 + 18
February: 3 + 17	June: 8 + 22	October: 12 + 26	February 2021: 15
March: 2 + 16 + 30	July: 6 + 20	November: 9 + 23	March 2021: 1 + 15
April: 14 + 27	August: 3 + 17 + 31	December: 7	For bookings sent after Dec 1st, the new pricelist will apply.

**The school will be closed on the following public holidays in 2020:**

December 2019: 23 -	June: 2 + 24
January 2020: 3 + 6	August: 15
April: 13 + 25	December 2020: 8 + 25 -
May: 1	January 2021: 1









## Cradle of the Renaissance

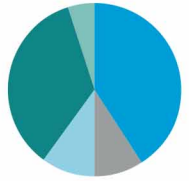
Florence has been the centre of fine arts & sciences for centuries & rightly belongs to the world's heritage.



Sprachcaffe is located in the heart of Florence's historic centre.

-  **Established in 1987**
-  **Capacity around 100 students**
-  **Café Student lounge Student library**
-  **Free internet access**
- 35+** **Available on: Mar 02, Sep 21**

### Student population



- Western Europe 41%
- Americas 35%
- Asia 10%
- Eastern Europe 9%
- Others 5%

